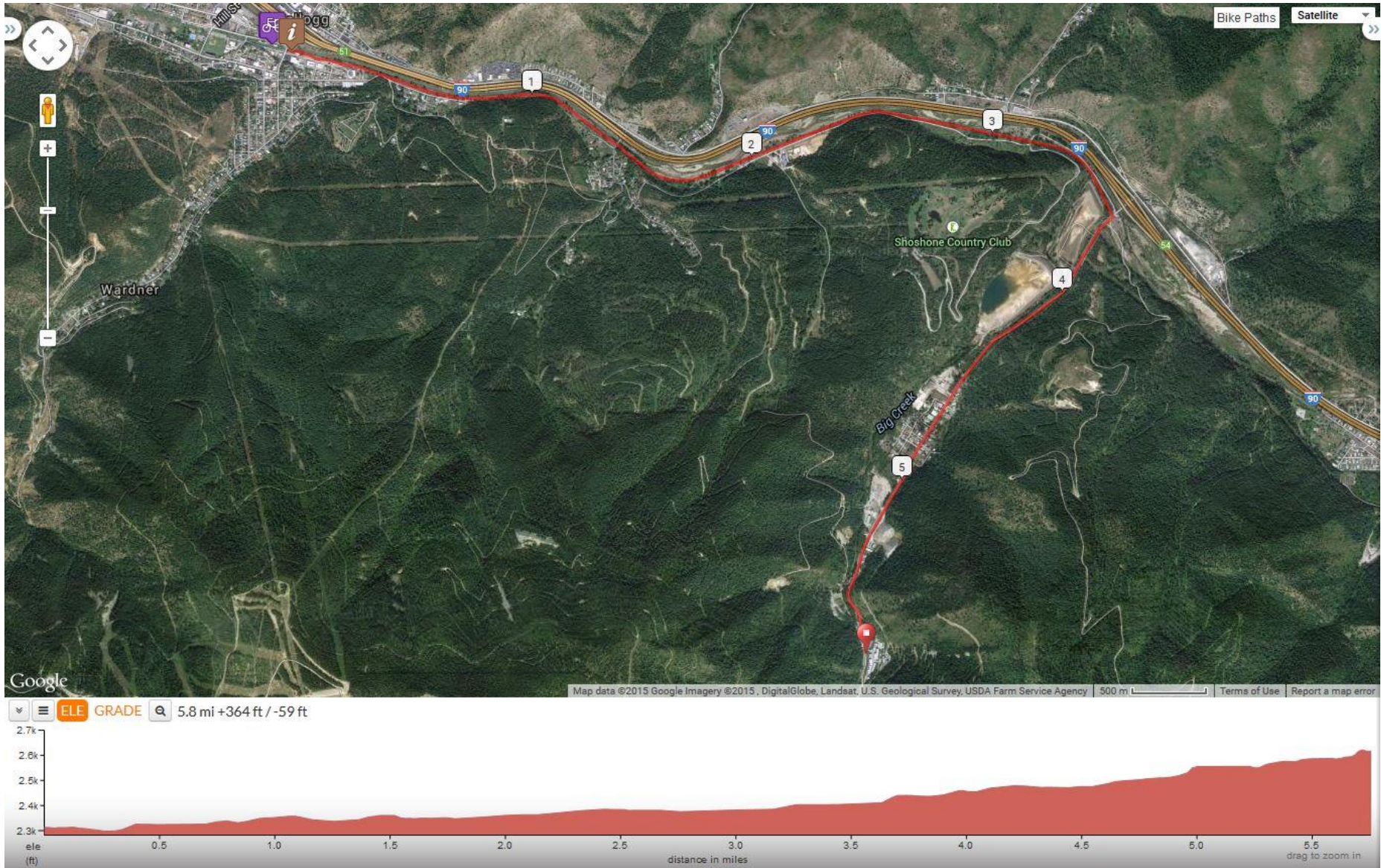


Sunshine Mine Ride

(starting at the Kellogg Depot Trail Head)

Provided by Historic Silver Valley Chamber of Commerce www.kelloggidah.org



Sunshine Mine Ride

(starting at the Kellogg Depot Trail Head)

Provided by Historic Silver Valley Chamber of Commerce www.kelloggidah.org

Route Directions:

Take I-90 Kellogg Exit 51. Turn South on Division St. Just after you cross the S. Fork of the Coeur d'Alene River is Railroad Ave on your right. Go past that and the Trail of the Coeur d'Alenes then turn right into the In Cahoots parking lot. Continue through the parking lots to the last area that is the Trail Head parking area. Alternatively you can park at the Excelsior Cycle lot of the Historic Silver Valley Chamber Visitor Center lot nearby. This ride will begin on the Trail of the Coeur d'Alenes then continue on Big Creek Road to the Sunshine Mine. Big Creek Road has some rough spots. It also has some busy truck traffic for the first 1/2 mile.

Mileage	Comments
0.0	Head East on the Trail of the Coeur d'Alenes.
3.6	To your left, on the other side of I-90 is the memorial to the 91 miners that died in the May 1972 Sunshine Mine fire. Turn right onto Big Creek Road.
5.8	You have arrived at the Sunshine Mine on your left. To the right is the road to the Crescent Mine. Neither of these mines currently produces silver ore.

