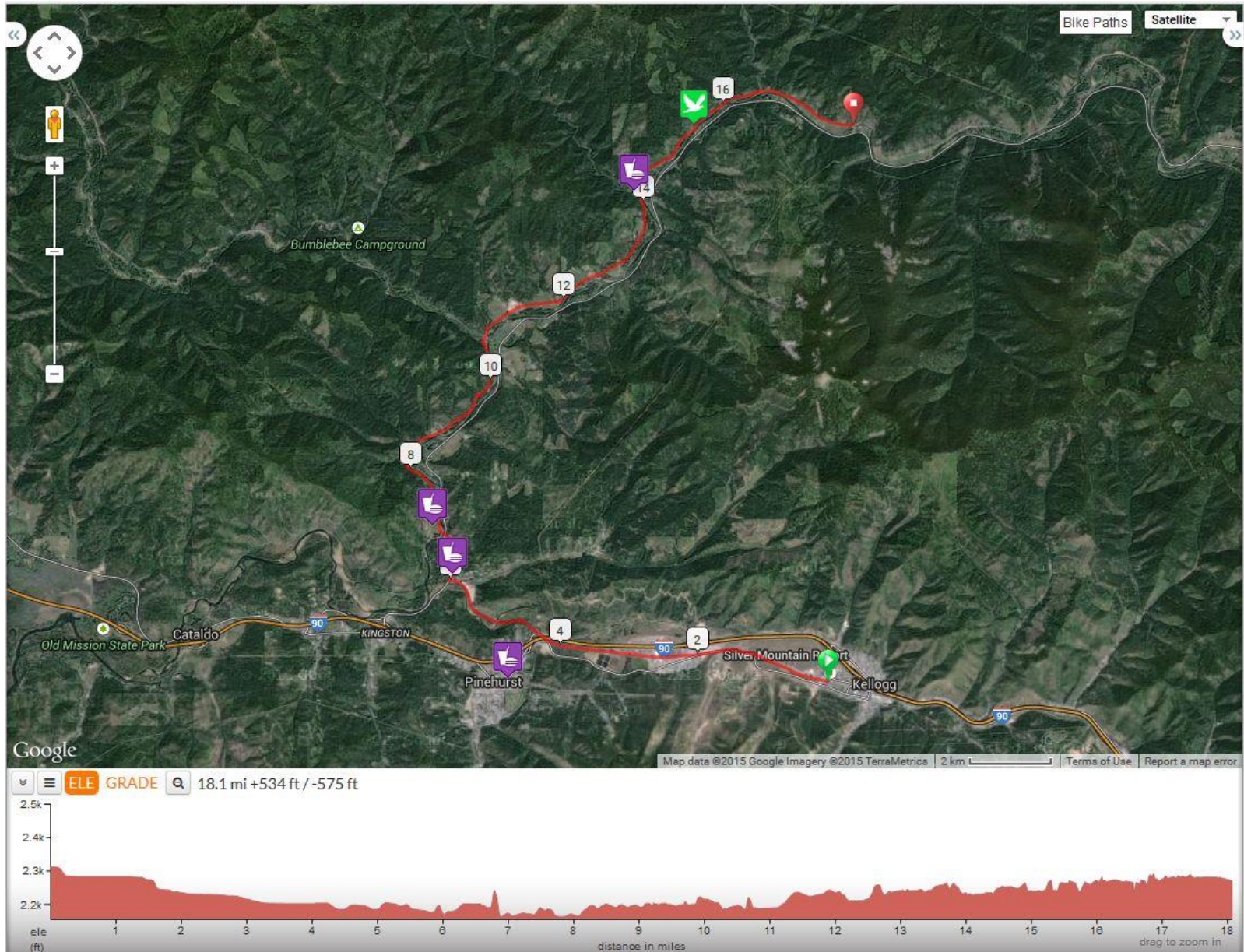


# Old River Road Ride (starting at the Silver Mt Trail Head)

Provided by Historic Silver Valley Chamber of Commerce [www.kelloggidah.org](http://www.kelloggidah.org)



# Old River Road Ride

(starting at the Silver Mt Trail Head)

Provided by Historic Silver Valley Chamber of Commerce [www.kelloggidah.org](http://www.kelloggidah.org)

## **Route Directions:**

Exit I-90 at Kellogg Exit 49, head toward the Silver Mt Resort parking lot. The Trail Head is between the Silver Mt parking lot and the GuestHouse Inn parking lot. The Old River Road is very scenic. The pavement is a little rough. It can be quite busy on summer weekends.

Mileage	Comments
0.0	Head East toward Smeltonville on the Trail of the Coeur d'Alenes.
6.0	The Enaville Trail Head is straight ahead with a toilet. Turn right onto the Coeur d'Alene River Rd. The Enaville Resort (aka the Snakepit) is to your right. It is a good place to stop for food and drink.
6.8	Turn right onto Old River Road and continue across the bridge.
11.5	A large elk herd is sometimes seen in these meadows.
12.0	Country Lane Resort. Another good place to stop for food and drink.
18.1	End of the paved road. Ahead there is 6 miles of gravel road which will take you back to the Coeur d'Alene River Road. If you want to make this a loop ride, you can continue then turn right to return to Enaville.

